

Places to visit in Great Britain



Research a place that you want to visit in Great Britain

Create a poster or powerpoint about it. Write a fact about where it is located and price of tickets.

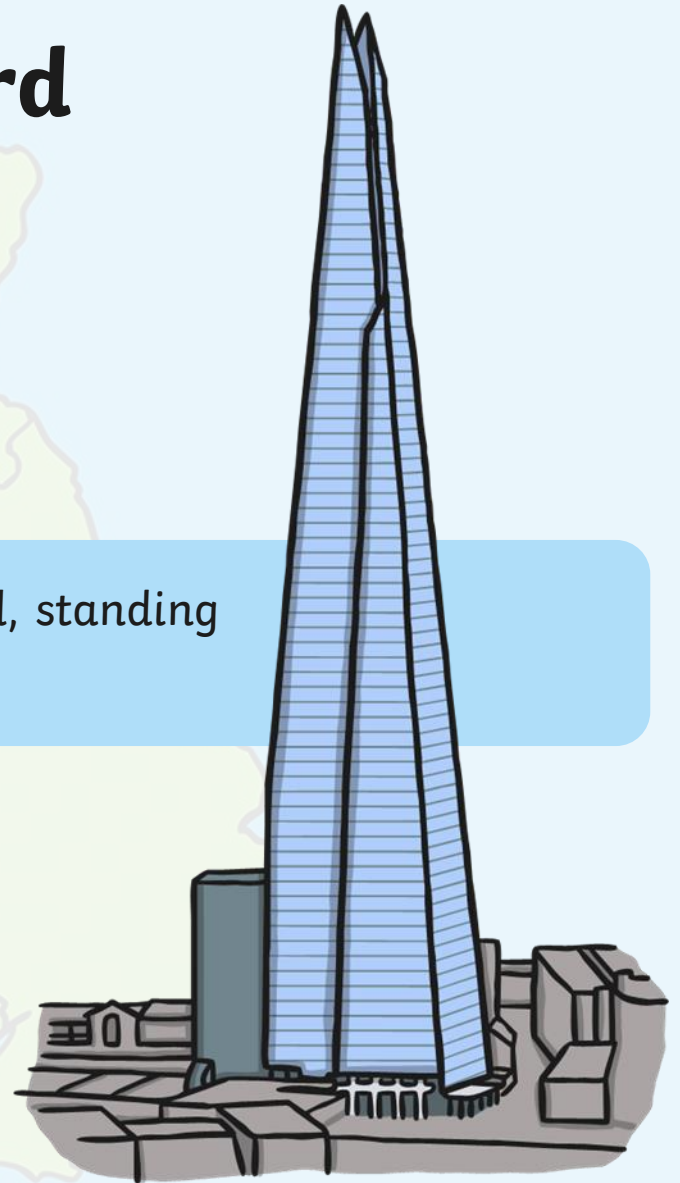
OR

Make a model of the place that you want to visit out of recycled materials such as cereal boxes, kitchen roll tubes and newspapers.

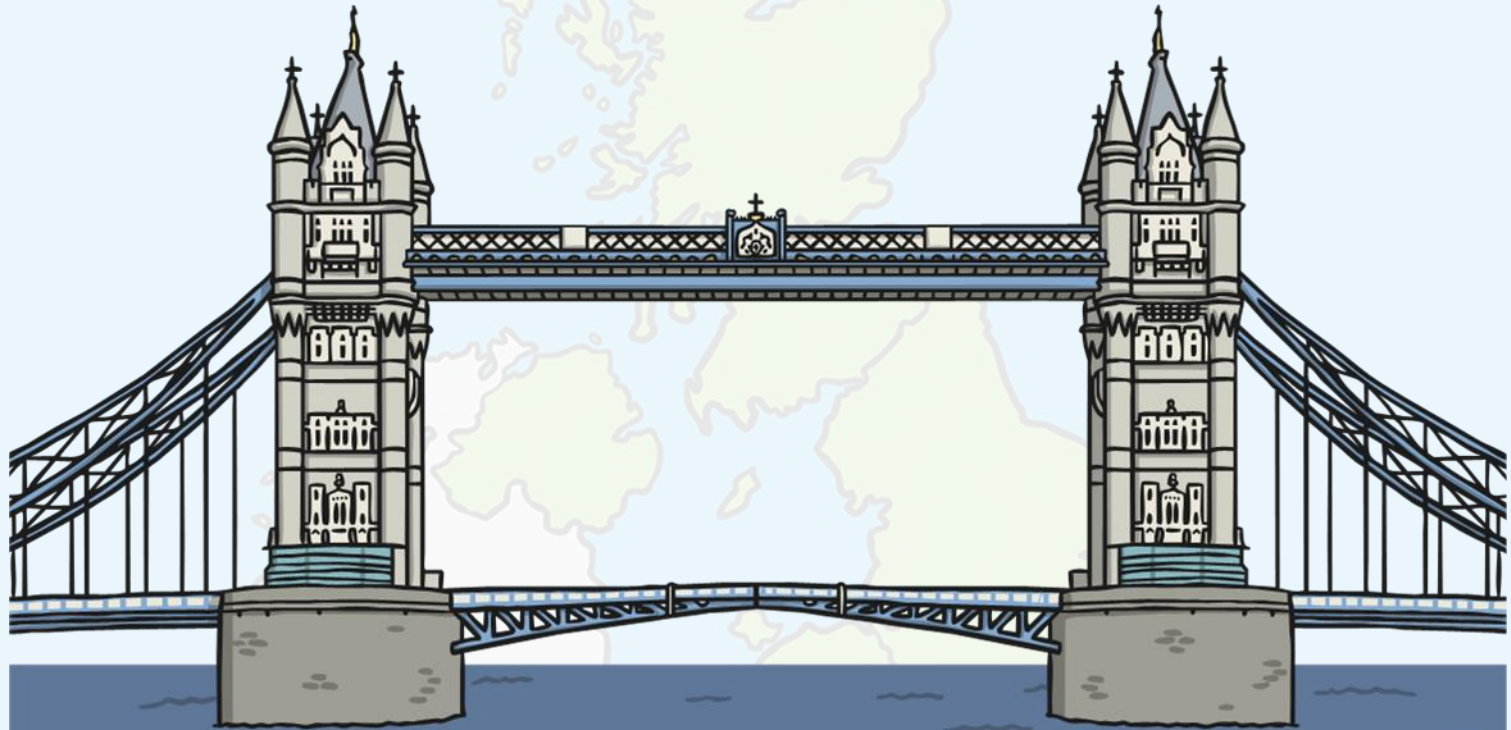


The Shard

The tallest building in London is The Shard, standing at 310 metres tall.

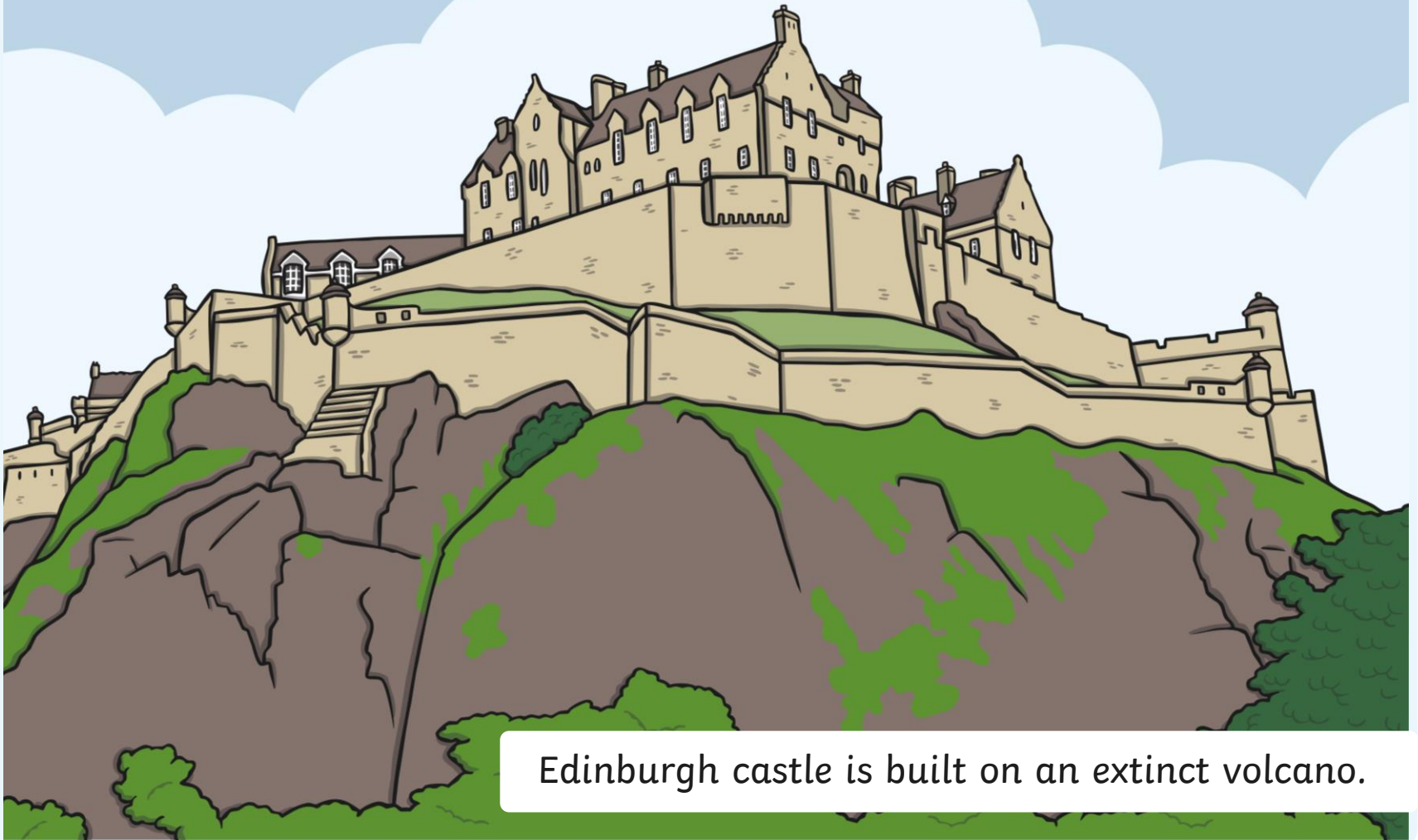


Tower Bridge



Tower Bridge, standing at 244m high, was opened in 1894. It is named after The Tower of London.

Edinburgh Castle



Edinburgh castle is built on an extinct volcano.

Stonehenge



twinkl

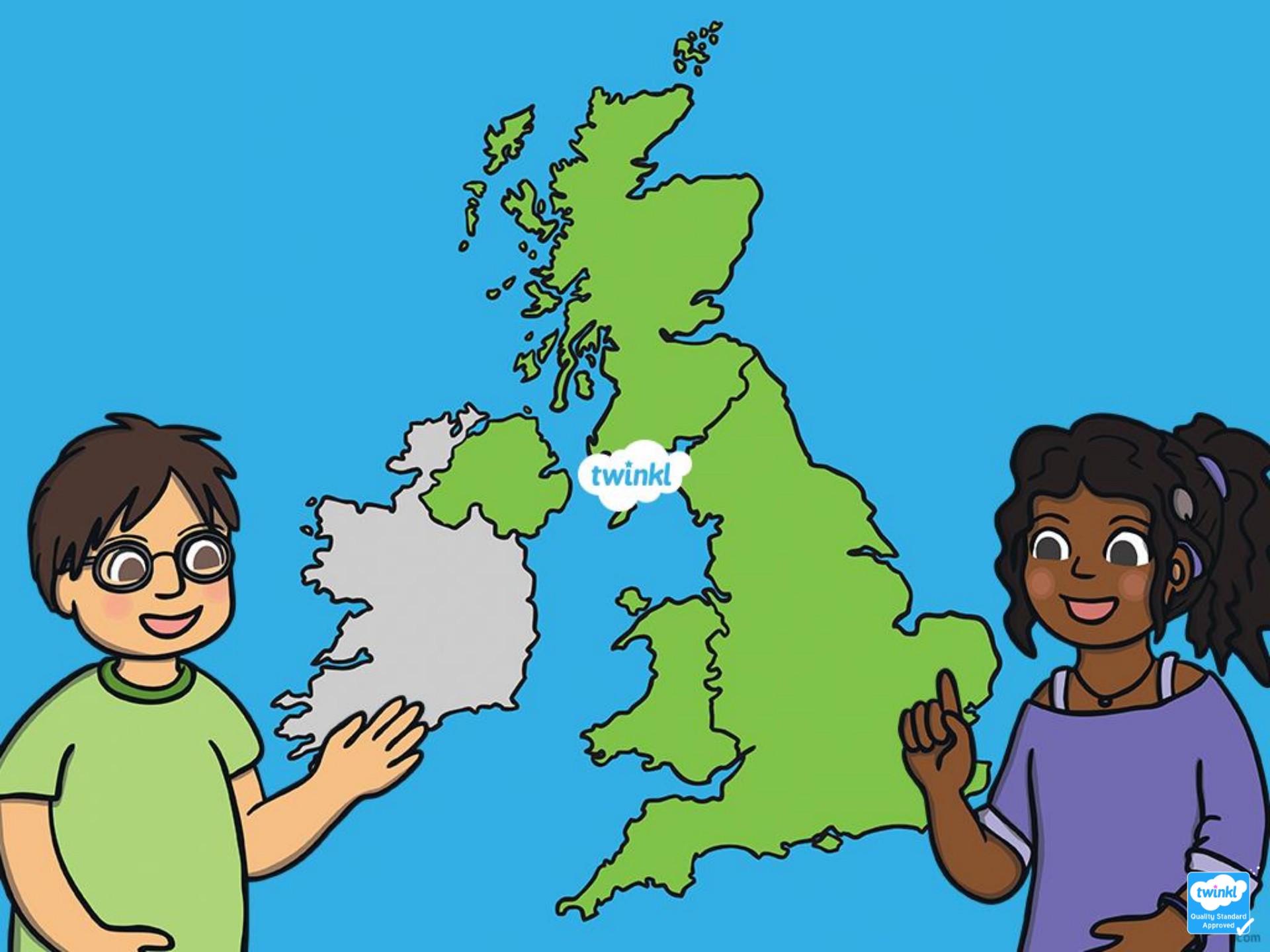
Stonehenge is on Salisbury Plain in a place called Amesbury in Wiltshire in the south of England.

City of Castles

There are three castles still standing in Cardiff: Cardiff Castle, St Fagan's Castle and Castell Coch Castle.



St Fagan's Castle



twinkl