

# Deciduous and Evergreen Trees



twinkl

# Aim

- To find and name a variety of deciduous and evergreen trees.

# Success Criteria

- To identify the basic structure of a tree.
- To group trees according to their qualities.
- To know what is meant by 'deciduous' and 'evergreen'.

# Starter

There are two types of tree:



deciduous



evergreen

# Starter

What do you think makes a tree an evergreen?  
(The clue is in its name!)

evergreen



# Evergreen Trees

An **evergreen** tree keeps its green leaves all year round.



# Deciduous Trees

A **deciduous** tree loses its leaves each year.



# Deciduous Trees

In **autumn**, the leaves on deciduous trees change colour and fall off.



# Deciduous Trees

In **winter**, deciduous trees usually have no leaves on their branches.





**Let's go on a tree hunt!**



# Tree Hunt Activity

There are lots of different types of deciduous and evergreen trees growing in this country.

We are going to hunt for trees in the area around us.

We will try to name the trees by looking carefully either at the leaves, nuts or fruits they have produced.



# Tree Hunt Activity

## You will need:

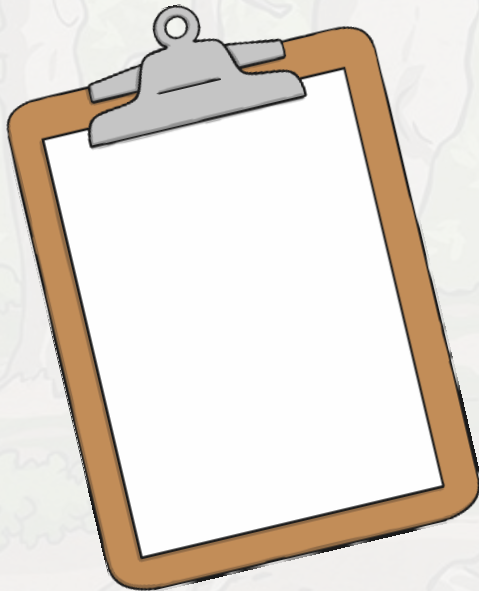
Tree Identification Activity Sheet

A magnifying glass

A leaf collection pouch

A pencil

A clipboard



# Tree Hunt Activity

When you find a new tree, try to find one of its leaves on the floor.

Look at the leaf carefully using a magnifying glass and find the leaf on the **Tree Identification Activity Sheet**.

Tick the tree you have found and put the leaf in your collection pouch.

If you find a leaf that you can't identify, collect it and bring it back to school!



# Discussion



# Discussion

Which tree had the smallest leaf?



# Discussion



Did you find any leaves that were **not** on the identification sheet?

# Plenary

Two trees on your identification sheet are **evergreen** and the rest are **deciduous**.

Evergreen leaves are:

Small

Narrow

Thick

Waxy



Can you decide which of the leaves on the sheet might be evergreen?



# Plenary



yew



holly

# Aim

- To find and name a variety of deciduous and evergreen trees.

# Success Criteria

- To identify the basic structure of a tree.
- To group trees according to their qualities.
- To know what is meant by 'deciduous' and 'evergreen'.



twinkl